

Regal Residences

Take a sneak peak inside three downtown dream homes usually kept under lock and key.

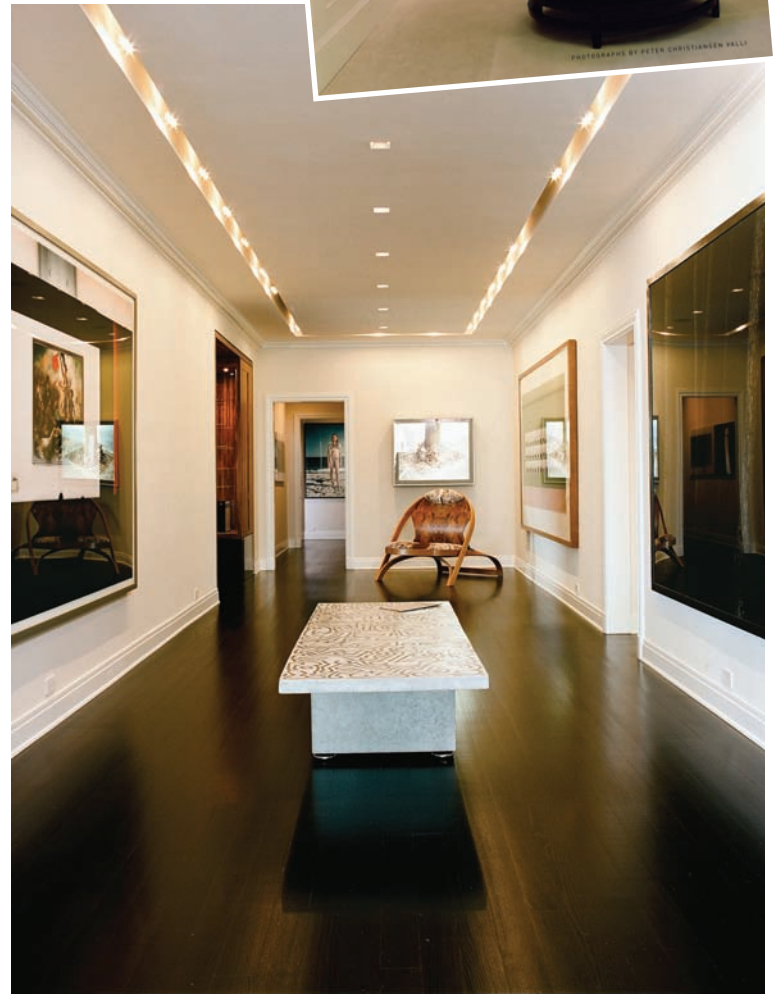
THINK THE RECESSION has forced people to downsize or flee to the suburbs? Think again. From Chicago to New York, Los Angeles to Miami, a new breed of revolutionary urban residents are redefining city living, coming up with some pretty innovative ways to carve out spectacularly colossal spaces for themselves. *Michigan Avenue's* shelter and design editor, Sue Hostetler, has compiled a new coffee-table book profiling 19 of these eye-popping homes, three of which are in Chicago.

Majestic Metropolitan Living (Clarkson Potter; \$65) offers a behind-the-scenes tour through some of the most unique and beautifully designed residences in the heart of the city, and reveals how the savvy and visionary owners went about

creating their larger-than-life homes; properties include a former school, a synagogue and a Russian consulate. Chicagoans profiled include a world-class art-collector in his sprawling museumlike apartment in an überexclusive Lake Shore Drive co-op; one of the city's first families and their immense Gold Coast duplex apartment, designed by Midwest star-architect Lucien Lagrange; and the singularly jaw-dropping German Baroque Dewes Mansion, recently converted back to a 16,000-square-foot single-family home by a hot young couple. Added to the mix is the work of iconic designers like Thomas O'Brien, Dirk Denison, Daniel Romualdez, David Easton and Michael Richman. Architectural porn, anyone?



REPRINTED FROM THE BOOK MAJESTIC METROPOLITAN LIVING BY SUE HOSTETLER. COPYRIGHT © 2009 BY SUE HOSTETLER. PHOTOGRAPHS COPYRIGHT © 2009 BY PETER CHRISTIANSEN VALLI. PUBLISHED BY CLARKSON POTTER, A DIVISION OF RANDOM HOUSE, INC.



CLOCKWISE FROM TOP: A vaulted-ceiling circular sunroom in the Lucien Lagrange-designed Gold Coast building boasts infinite views of Lake Michigan, exudes a hint of Old World charm and is easily the most magical room in the vast apartment. Iconic interior designer David Easton outfitted the space in relaxed furnishings like a tufted sofa upholstered in herringbone cotton and linen and an assortment of cushioned chairs, surrounding a coffee table by Costello Studio; Sue Hostetler's *Majestic Metropolitan Living*; the entrance gallery to the stunning Lake Shore Drive collector's apartment is filled with world-class art and furniture, punctuated by specialized Light Lab recessed lighting. Photographs by Thomas Struth face each other, flanking *Coffee Table*, a bronze bench with pewter inlay by Keith Haring. A chair by Richard Artschwager can be seen at the far end of the room. The residence was designed by celebrated local architect Dirk Denison; the Gold Coast duplex's dining room. OPPOSITE PAGE: A custom club series sofa from Brueton in Glant fabric sits behind a Lucid coffee table designed by Michael Richman. Lounge chairs by Andre Sornay upholstered in Maharam fabric sit on either side. Behind, oversized photographs by Thomas Struth flank an Andreas Gursky hanging in the office.